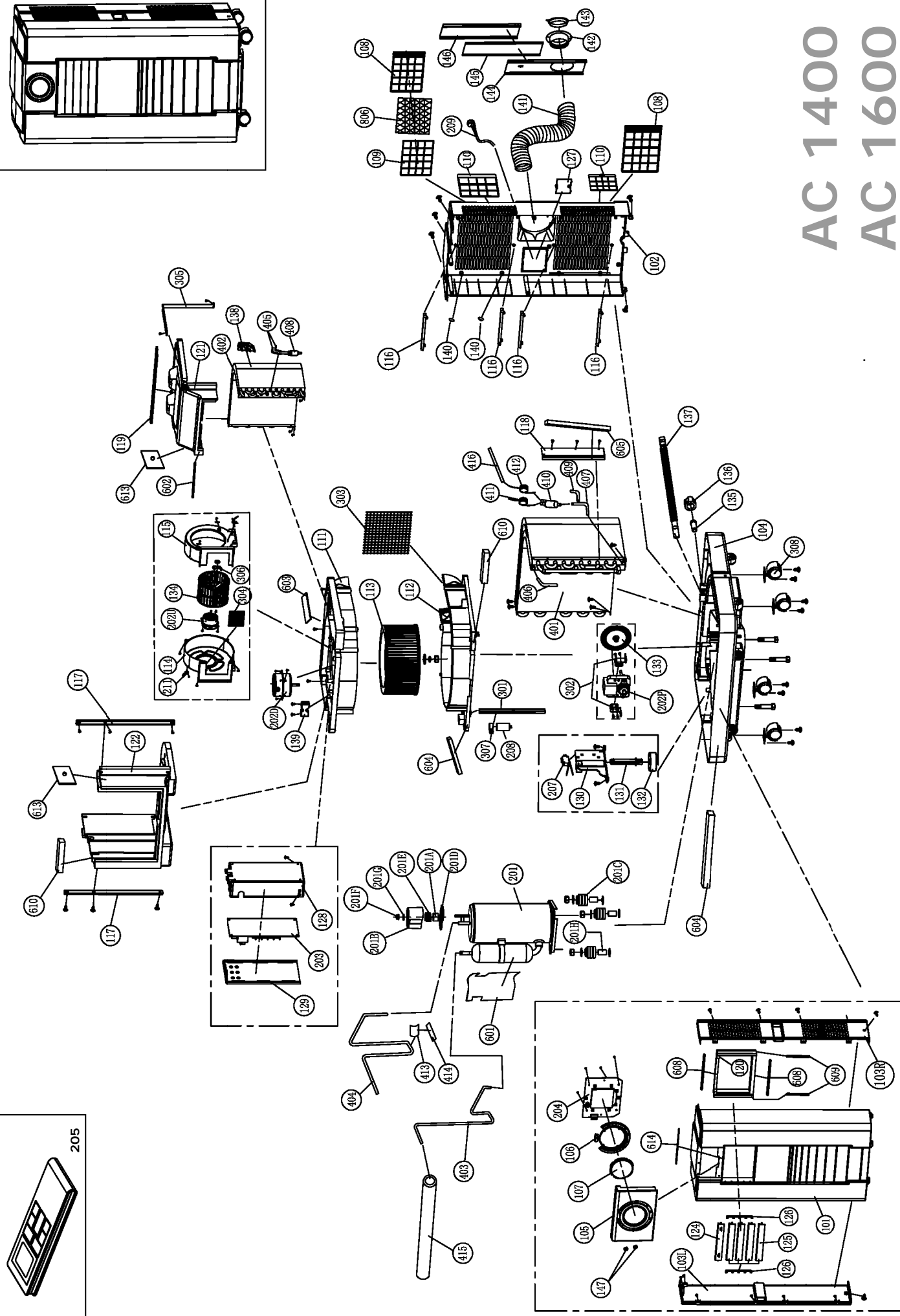
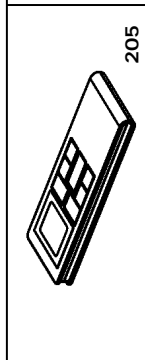
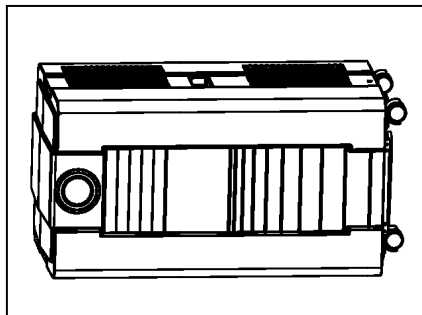




AC 1400 AC 1600



Key no.	Part no.	Description	Key no.	Part no.	Description
101	S/R	Front Panel	201E	N/A	Steel Helical Spring
102	S/R	Rear Panel	201F	N/A	Nut
103L	S/R	Left Side Panel	201G	N/A	Pad For Nut
103R	S/R	Right Side Panel	201H	N/A	Anti-Vibration Socket
104	S/R	Bottom Base	202D	4603.111	Down Motor
105	4603.150	Control Panel	202P	4603.113	Pump Motor
106	4603.151	Digital Button	202U	4603.112	Up Motor
107	4603.152	Transparent Cover	203	4603.153	Main P.C. Board AC 1600
108	4603.105	Rear Filter	203	4603.157	Main P.C. Board AC 1400
109	4603.107	Fixer For Rear Filter	204	4603.154	Control P.C. Board AC 1600
110	4603.106	Side Filter	204	4603.160	Control P.C. Board AC 1400
111	4603.158	Top Funnel For Wind-Duct	205	4603.155	Remote Control
112	4603.159	Bottom Funnel For Wind-Duct	207	S/R	Micro Switch
113	4603.102	Down Fan Blade (For Condensor)	208	S/R	Compressor Capacitor
114	S/R	Left Wind-Duct	209	S/R	Power Cord
115	S/R	Right Wind-Duct	211	4603.156	Ionizer
116	4603.119	Filter Track	301	S/R	Main Fixture
117	S/R	Filter Fixer	302	S/R	Fixture For Pump Motor
118	S/R	Front Wind Plate	303	S/R	Heat-Dispensating Screen
119	S/R	Top Fixer	304	S/R	Screen For Top Wind-Duct
120	S/R	Water-Proof Polyfoam For Front Panel	305	S/R	Fixture For Top Wind-Duct
121	S/R	Polyfoam For Upper Wind-Duct	306	S/R	Fixing Clip For Fan-Blade 
122	S/R	Polyfoam For Down Wind-Duct	307	S/R	Capacitor Fixer
124	4603.121	Main Louver	308	4602.118	Caster
125	4603.122	Side Louver	401	N/A	Condenser
126	4603.120	Louver Rod	402	N/A	Evaporator
127	S/R	Cover For Cord Compartment 	403	S/R	Suction Tube
128	S/R	Protective Box For Electric Parts	404	S/R	Discharging Tube
129	S/R	Plate For Box Of Electronic Parts	405	S/R	Inlet Tube For Evaporator
130	S/R	Micro Switch Base	406	S/R	Outlet Tube For Condensor
131	S/R	Lever	407	S/R	Outlet Tube For Condensor
132	S/R	Float	408	S/R	3 Way Valve Branch (E)
133	4603.118	Pumping Blade	409	S/R	Refrigerant Charging Tube
134	4603.103	Up Fan Blade (For Evaporator)	410	S/R	Filter (A)
135	4603.116	Rubber Stopper	411	S/R	Capillary - Top
136	4603.117	Water Stopper	412	S/R	Capillary - Down
137	4603.104	Drainage Pipe	413	S/R	Damper Glue
138	S/R	Sensor Fixer	414	S/R	Pvc Sleeve
139	S/R	Wiring Fixer	415	S/R	Thermal Sleeve
140	S/R	Screws Plug	416	S/R	Sleeve For Capillary
141	4603.100	Exhaust Pipe	601	S/R	Rubber Foam For Accumulator
142	4603.101	Round Window Connector	602	S/R	Sealed Foam For Top Wind-Duct
143	4603.101	Cover For Round Window Connector	603	S/R	Water Proof Foam For Top Funnel
144	S/R	Pvc Window Kit (A)	604	S/R	Sealed Foam For Funnel Of Wind-Duct
145	S/R	Pvc Window Kit (B)	605	S/R	Sealed Foam For Front Protective Plate
146	S/R	Pvc Window Kit (C) ...	608	S/R	Foam For Air Vent (A)
147	S/R	Receiver For Remote Control	609	S/R	Foam For Air Vent (B)
201	N/A	Compressor	610	S/R	Sealed Foam For Accessory Pipes
201A	N/A	Overload Protector	613	S/R	Sealed Foam For Wind Polyfoam
201B	N/A	Protective Cover For Compressor	614	S/R	Heat-Insulation Foam For Front Panel
201C	N/A	Rubber Grommet	806	4603.108	Active Carbon Filter
201D	N/A	Pad			

S/R – Spare Parts Available By Special Request Only N/A – Parts Not Available

When ordering parts, be sure to provide the correct model, MCS part number and description.